

HONG KONG 2024 WORLD TAEKWONDO POOMSAE CHAMPIONSHIPS

Accommodation Guide

大型體育活動事務委員會
Major Sports Events Committee





The indoor venue spans over 1,600 square meters



The venue has over 12,500 seating capacity

HONG KONG 2024 WORLD TAEKWONDO POOMSAE CHAMPIONSHIPS

Competition Dates: 30th November – 4th December 2024

Competition Venue: Hong Kong Coliseum

Location: 9 Cheong Wan Road, Hung Hom, Kowloon, Hong Kong

Web: <https://www.lcsd.gov.hk/en/hkc/index.html>

Hosting Organization: Hong Kong, China Taekwondo Association

Official Recognition Organization: World Taekwondo

The Hong Kong 2024 World Taekwondo Poomsae Championships, organized by the Hong Kong, China Taekwondo Association, will have accommodations for participants and accompanying personnel during the competition arranged by the official agency of the Hong Kong, China Taekwondo Association, **PC Tour & Travel**.

Accomodations Agency Information

Accomodation Agency	PC Tour & Travel
Location	Unit C, 3/F., Shui Sum Building, 8-10 Kwai Sau Road, Kwai Chung, Hong Kong
Contact Person	Mr. Brian Lee
Contact Number	+852 2734 3346
E-mail	WTPC2024@pctourshk.com
Fax	+852 2723 9044

Reservation

The reservations will be accepted on a first-come, first-served basis.

Booking Process

1. Click in the reservation link and select your interested hotel
2. Fill in the information require
**Full Payment is required at the time of booking*
3. Make the full payment before the payment due date/ time
4. Receive the confirmation email from your selected hotel
**Check in hotel with your confirmation email*

Booking Deadline

The deadline for accommodation reservations is **2nd November 2024**, Hong Kong Standard Time. (For any assistance after the deadline, please don't hesitate to reach out to PC Tour & Travel.)

Confirmation

Once the full payment is completed, you will receive the confirmation email with booking number from your selected hotel.

Terms & Condition

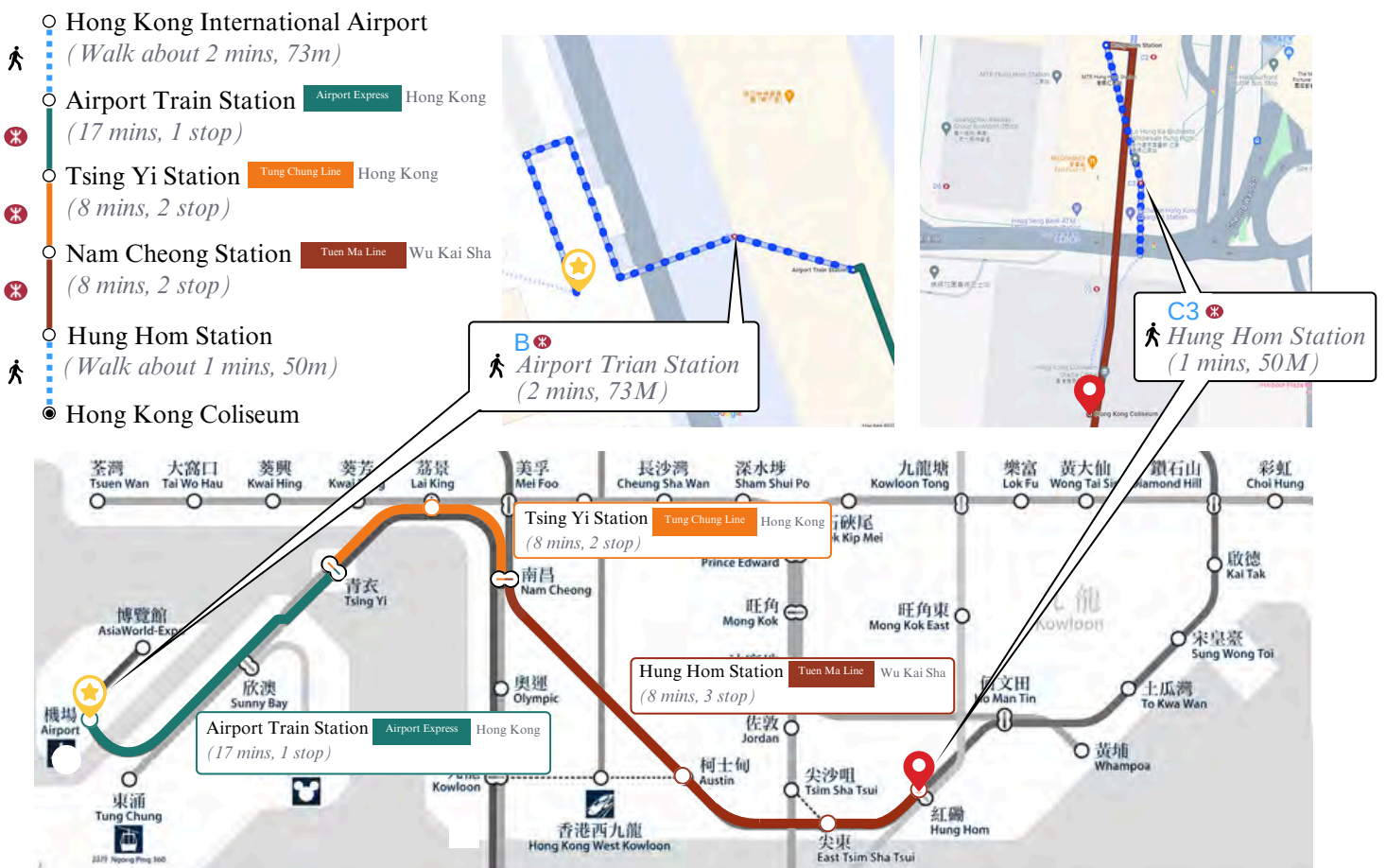
Please refer to the booking links of each hotel to understand the terms and conditions for booking at the designated hotels.

Transportation Services

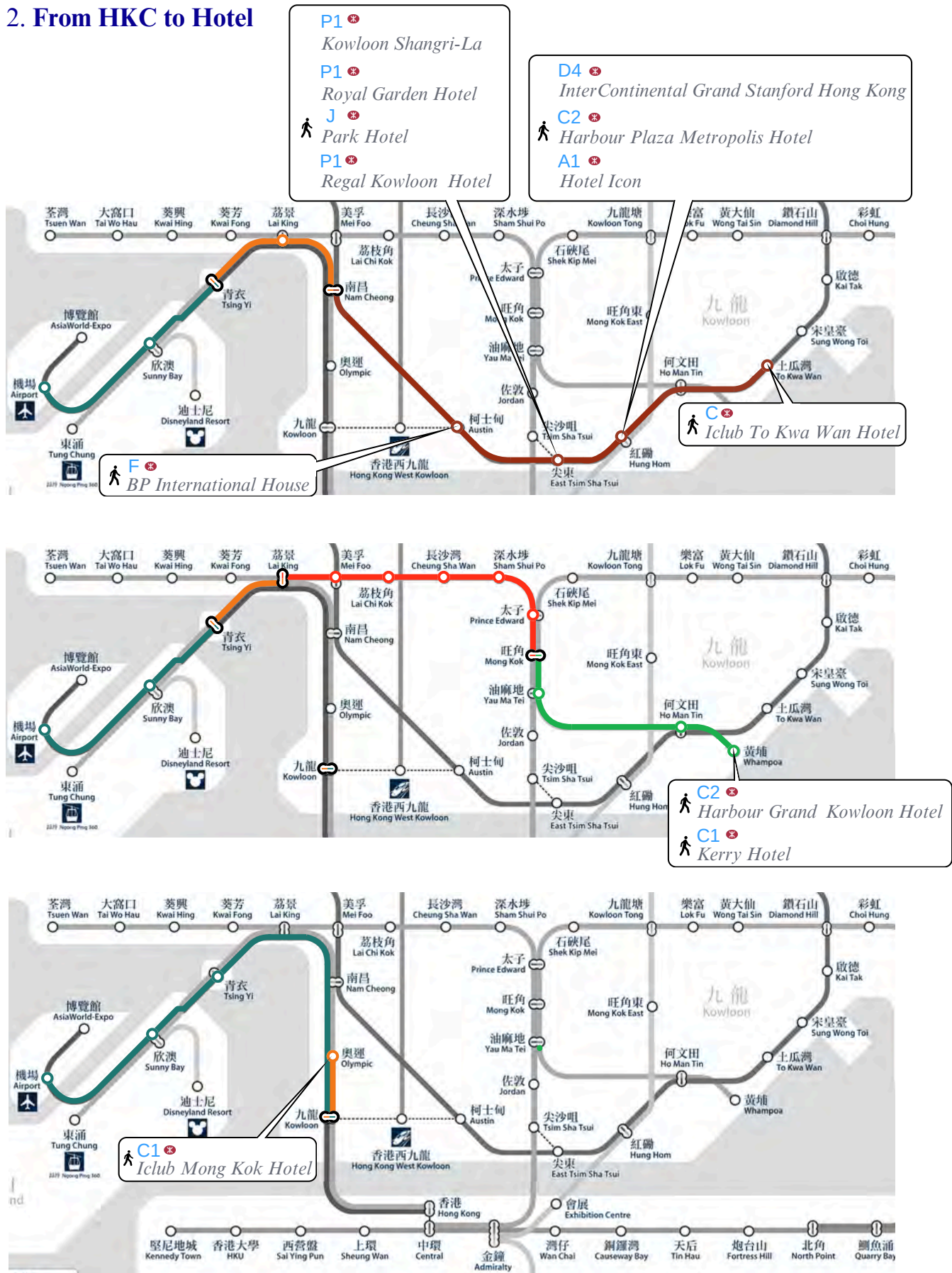
- There will be a complimentary shuttle service provided for transportation between Hong Kong International Airport, Hong Kong Coliseum, and designated hotels.
- Please note that this service is **only** applicable to participating athletes and accompanying personnel who have booked **designated hotels**.
- *Please inform us of your arrival date, flight arrival time, and accommodation details in an Excel file by **2nd November 2024**.
- If you are unable to catch the complimentary shuttle service, we recommend considering the following routes and transportation options to reach your pre-booked hotel. Below are the suggested routes and transportation options from **Hong Kong International Airport to 10 hotels**:

1. From Hong Kong International Airport to HKC

* **Train** (48 - 52 mins)



2. From HKC to Hotel



Important

All room and breakfast rates are subject to a **10% service charge**. For more detailed information, please refer to the booking link provided in each hotel's information.

1. Iclub To Kwa Wan Hotel ★★☆☆

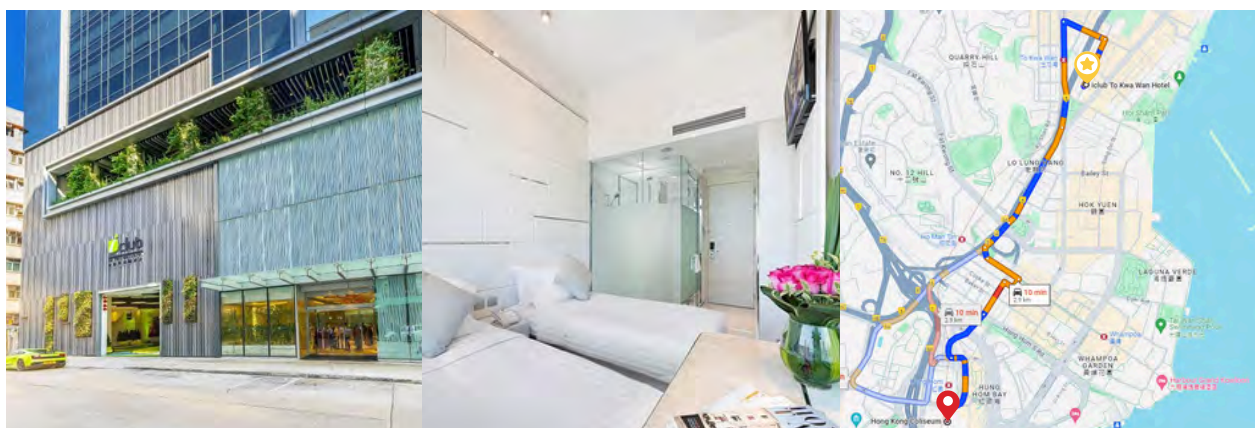
Address: 8 Ha Heung Road, Ma Tau Wai, Kowloon City District, Hong Kong

Tel: +852 3963 6600 / Fax: +852 3963 6622

Distance (between HKC and hotel): 3.7 kilometers

Travel time to venue: Around 7 - 11 mins

Booking Link: https://www.booking.regalhotel.com/?rhotel=ICMTW&prpcode=WTPC20242&utm_source=hotel&utm_medium=banner&utm_campaign=icmtw_2024+world+taekwondo+poomsae+championships



28-Nov	29-Nov	30-Nov	01-Dec	02-Dec	03-Dec	04-Dec
from hkd \$580	from hkd \$700	from hkd \$700	from hkd \$580	from hkd \$580	from hkd \$580	from hkd \$580

iSelect	(Double Bed / 14sqm)
iPlus	(2 Single Beds / 14sqm)
iPlus Family	(2 Single Beds / 14sqm)
iPlus Family	Extra bed can be arranged at hkd \$200 per day per room

* Complimentary morning snacks and coffee available

* Hotel do not have a restaurant for breakfast

2. Iclub Mong Kok Hotel ★★☆☆

Address: 2 Anchor Street, Yau Tsim Mong District, Hong Kong

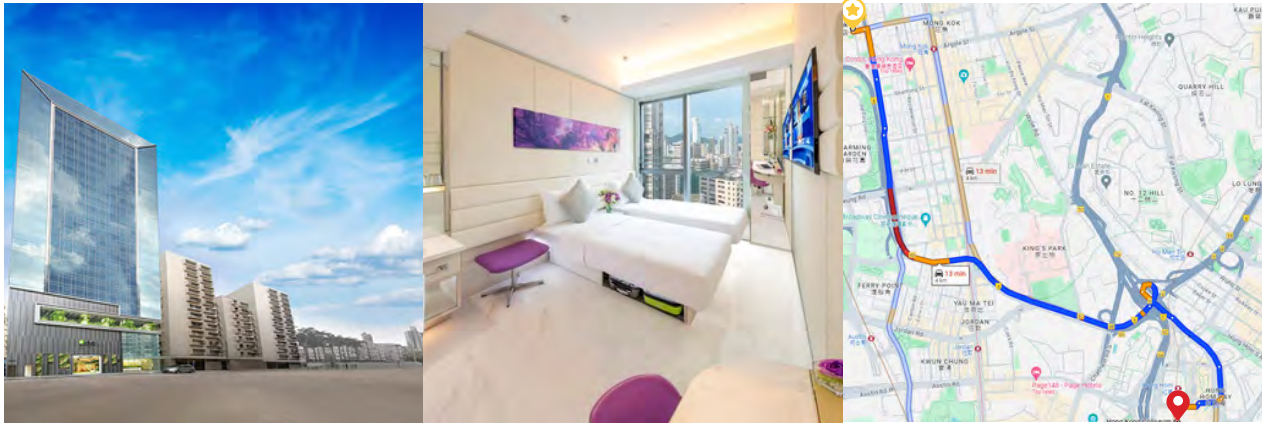
Tel: +852 3963 6800 / Fax: +852 3963 6822

Distance (between HKC and hotel): 4 kilometers

Travel time to venue: Around 9 - 13 mins

Booking link:

https://www.booking.regalhotel.com/rhotel=ICMTW&prcode=WTPC2024&utm_source=hotel&utm_medium=banner&utm_campaign=icmtw_2024+world+taekwondo+poomsae+championships



28-Nov	29-Nov	30-Nov	01-Dec	02-Dec	03-Dec	04-Dec
from hkd \$680	from hkd \$800	from hkd \$800	from hkd \$680	from hkd \$680	from hkd \$680	from hkd \$680
iSelect	(Double Bed / 16sqm)					
iPlus	(2 Single Beds / 16sqm)					
iPlus Family	(2 Single Beds / 16sqm)					
iPlus Family	Extra bed can be arranged at \$200 per day per room					

* Complimentary morning snacks and coffee available

* Hotel do not have a restaurant for breakfast

3. Harbour Plaza Metropolis Hotel ★★☆☆

Address: 7 Metropolis Drive, Hung Hom, Kowloon, Hong Kong

Tel: +852 3160 6888

Distance (between HKC and hotel): 120 meters

Travel time to venue: Around 1-4 mins

Booking Link: https://be.synxis.com/?_ga=2.93752277.9122245.1721521919-1401457462.1714618824&adult=1&arrive=2024-11-29&chain=21619&child=0&cy=HKD&depart=2024-12-05&group=wtpc2024&hotel=76636&level=hotel&locale=en-US&rooms=1&sbe_rc=Nzg2YzA2ZjEtMGM5NS00OWExLTk2OWYtYTQwMjc2MzczZGY4



Room Category			Rate (28 Nov - 04 Dec)
Superior Room :	Twins: 130	Doubles: 30	from hkd \$1,000
Premier Room :	Twins: 20	Double 10	from hkd \$1,100
Deluxe Room :	Twins: 20	Double:10	from hkd \$1,250
Superior Suite :	/	Double: 20	from hkd \$1,500

4. BP International House ★★★★★

Address: 8 Austin Road, Yau TsimMong District, Hong Kong, Hong Kong

Tel: +852 2376 1111

E-mail: enquiry@bpih.com.hk

Distance (between HKC and hotel): 3.1 kilometers

Travel time to venue: Around 6 - 10 mins

Booking means:

Please complete the reservation form located in the Google Drive

(https://docs.google.com/document/d/1f86RHcgzMbn8TnkTwAG4mbmGebkXZBZR/edit?usp=drive_link&oid=108465939767854773588&rtopof=true&sd=trueand) return it to the hotel via the email address:

bpi.corp@bpih.com.hk. The hotel will reply with a confirmation to the sender's email.



28-Nov	29-Nov	30-Nov	01-Dec	02-Dec	03-Dec	04-Dec
from hkd\$950	from hkd \$1,350	from hkd \$1,350	from hkd \$950	from hkd \$950	from hkd \$950	from hkd \$950
Room Category:		City Vista Room				

✔ Breakfast Rate: \$100 per person per day

5. Royal Garden Hotel ★★★★★

Address: 69 Mody Road, Tsimshatsui East, Kowloon, Hong Kong

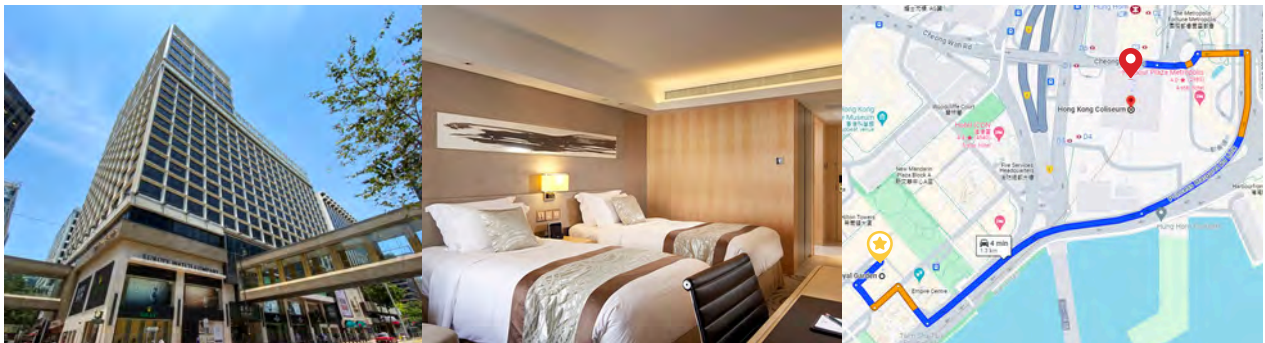
Tel: +852 2721 5215

E-mail: htlinfo@rghk.com.hk

Distance (between HKC and hotel): 1.3 kilometers

Travel time to venue: Around 3 - 5 mins

Booking link: https://www.book-secure.com/index.php?s=results&property=cnhon27174&arrival=2024-11-28&departure=2024-11-29&code=WTPC2024&adults1=2&children1=0&locale=en_GB&cy=HKD&stid=mdqjms8jd



28-Nov	29-Nov	30-Nov	01-Dec	02-Dec	03-Dec	04-Dec
from hkd \$1,350	from hkd \$1,350	from hkd \$1,350	from hkd \$1,350	from hkd \$1,350	from hkd \$1,350	from hkd \$1,350
Room Category:		Superior Room				

✔ Breakfast Rate: \$150 per person per day

6. **Hotel Icon** ★★★★★

Address: 17 Science Museum Road, Tsim Sha Tsui East, Kowloon, Hong Kong

Tel: +852 3400 1000

Distance (between HKC and hotel): 1.5 kilometers

Travel time to venue: Around 3 - 6 mins

Booking link: <https://reservations.hotel-icon.com/?adult=2&arrive=2024-11-28&chain=12116&child=0&cy=HKD&depart=2024-11-29&hotel=51197&level=hotel&locale=en-US&promo=WOTC24&rooms=1>



28-Nov	29-Nov	30-Nov	01-Dec	02-Dec	03-Dec	04-Dec
from hkd \$2,300	from hkd \$2,610	from hkd \$2,820	from hkd \$2,130	from hkd \$2,060	from hkd \$2,100	from hkd \$2,080
Room Category:		Standard Room (Details please refer to the link)				

✔ Breakfast Rate: \$160 per person per day

7. **Harbour Grand Kowloon Hotel** ★★★★★

Address: 20 Tak Fung Street, Whampoa Garden, Hunghom, Kowloon

Tel: +852 2621 3188

E-mail: hgkln@harbourgrand.com

Distance (between HKC and hotel): 1.8 kilometers

Travel time to venue: Around 3 - 6 mins

Booking Link: <https://be.synxis.com/?Hotel=76633&Chain=21619&Dest=HKG&locale=en-US&arrive=2024-11-28&depart=2024-12-05&adult=1&child=0&group=2911PCT>



28-Nov	29-Nov	30-Nov	01-Dec	02-Dec	03-Dec	04-Dec
from hkd \$1,400	from hkd \$1,400	from hkd \$1,400	from hkd \$1,300	from hkd \$1,300	from hkd \$1,300	from hkd \$1,300
Room Category:		Standard Room (Details please refer to the link)				

✔ Breakfast Rate: \$160 per person per day

8. Regal Kowloon Hotel ★★★★★

Address: 71 Mody Road, Tsimshatsui, Hong Kong
 Tel: +852 2722 1818 / Fax: 2369 6950
 E-mail: info@kowloon.regalhotel.com
 Distance (between HKC and hotel): 1.2 kilometers
 Travel time to venue: Around 2 - 5 mins
 Booking link: [Book Now for Best Deals! \(regalhotel.com\)](#)

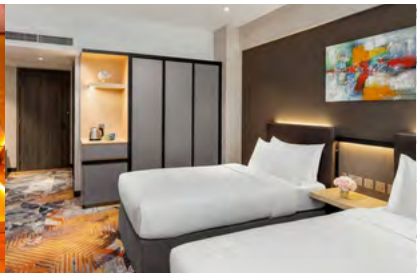


28-Nov	29-Nov	30-Nov	01-Dec	02-Dec	03-Dec	04-Dec
from hkd \$1,300	from hkd \$1,300	from hkd \$1,300	from hkd \$1,300	from hkd \$1,300	from hkd \$1,300	from hkd \$1,300
Room Category:		Superior Room				

✔ Breakfast Rate: \$130 per person per day

9. Park Hotel ★★★★★

Address: 61-65 Chatham Road South, Tsim Sha Tsui, Kowloon, Hong Kong
 Tel: +852 2731 2100
 E-mail: info.phhk@parkhotelgroup.com
 Distance (from HKC and hotel): 1.9 kilometers
 Travel time to venue: Around 6 - 10 mins
 Booking link: <https://www.parkhotelgroup.com/park-hotel-hong-kong/book/dates-of-stay?domain=portal.travelclick.com&groupID=4425884>



28-Nov	29-Nov	30-Nov	01-Dec	02-Dec	03-Dec	04-Dec
Superior Room (Double / Twin)						
from hkd \$1,200	from hkd \$1,400	from hkd \$1,400	from hkd \$1,200	from hkd \$1,200	from hkd \$1,200	from hkd \$1,200
Deluxe Triple Room (Three Single Beds)						
from hkd \$1,600	from hkd \$1,800	from hkd \$1,800	from hkd \$1,600	from hkd \$1,600	from hkd \$1,600	from hkd \$1,600
Premier Quintuple Room (1 King bed + 1 Queen Bed + 1 Single Bed, Max 5 pax)						
from hkd \$2,300	from hkd \$2,500	from hkd \$2,500	from hkd \$2,300	from hkd \$2,300	from hkd \$2,300	from hkd \$2,300

✔ Breakfast Rate: \$90 per person per day

10. Grand Stanford InterContinental Hong Kong ★★★★★

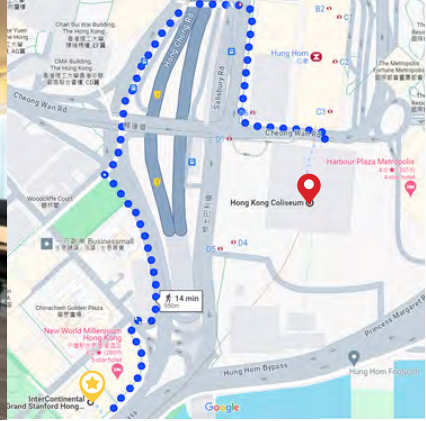
Address: 70 Mody Road, East Tsim Sha Tsui, Kowloon, Hong Kong

Tel: +852 2721 5161 / Fax: +852 2732 2233

Distance (between HKC and hotel): 1 kilometers

Travel time to venue: Around 13 - 14 mins

Booking link: [Select your room \(ihg.com\)](https://www.ihg.com)



28-Nov	29-Nov	30-Nov	01-Dec	02-Dec	03-Dec	04-Dec
from hkd \$1,550	from hkd \$1,550	from hkd \$1,550	from hkd \$1,350	from hkd \$1,350	from hkd \$1,350	from hkd \$1,350
Room Category:		Classic Room (Details please refer to the link)				

✔ Breakfast Rate: \$180 per person per day

11. Kowloon Shangri-La ★★★★★

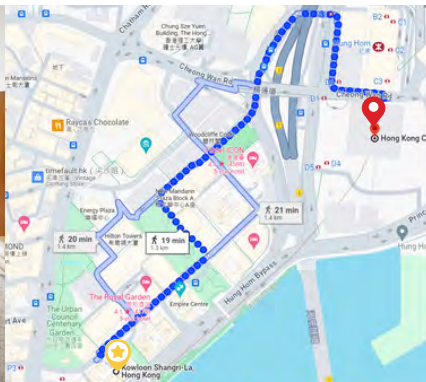
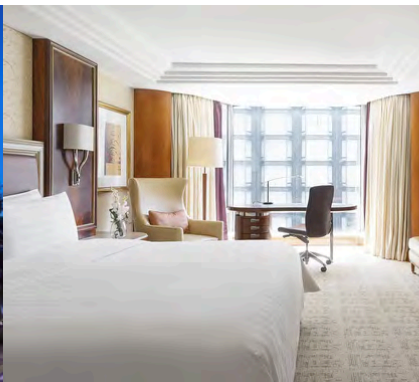
Address: 64 Mody Road, Tsim Sha Tsui East, Kowloon Hong Kong SAR

Tel: +852 2721 2111

Distance (between HKC and hotel): 1.3 kilometers

Travel time to venue: Around 15 -17 mins

Booking link: http://www.shangri-la.com/reservations/booking/en/index.aspx?hid=KSL&group_code=NON281124&check_in=20241125&check_out=20241207



28-Nov	29-Nov	30-Nov	01-Dec	02-Dec	03-Dec	04-Dec
from hkd \$1,600	from hkd \$1,600	from hkd \$1,600	from hkd \$1,600	from hkd \$1,600	from hkd \$1,600	from hkd \$1,600
Room Category:		Deluxe Room				

✔ Breakfast Rate: \$220 per person per day

12. Kerry Hotel ★★★★★

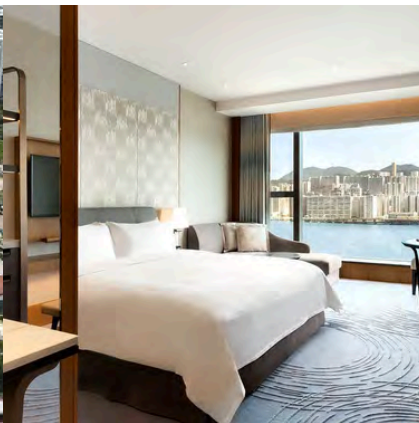
Address: 38 Hung Luen Road, Hung Hom Bay, Kowloon Hong Kong SAR

Tel: +852 2252 5888

Distance (between HKC and hotel): 1.1 kilometers

Travel time to venue: Around 14 - 15 mins

Booking link: http://www.shangri-la.com/reservations/booking/en/index.aspx?hid=KHHK&group_code=NON281124&check_in=20241125&check_out=20241207



28-Nov	29-Nov	30-Nov	01-Dec	02-Dec	03-Dec	04-Dec
from hkd \$1,600	from hkd \$1,600	from hkd \$1,600	from hkd \$1,600	from hkd \$1,600	from hkd \$1,600	from hkd \$1,600
Room Category:		Deluxe City View Room				

✔ Breakfast Rate: \$220 per person per day